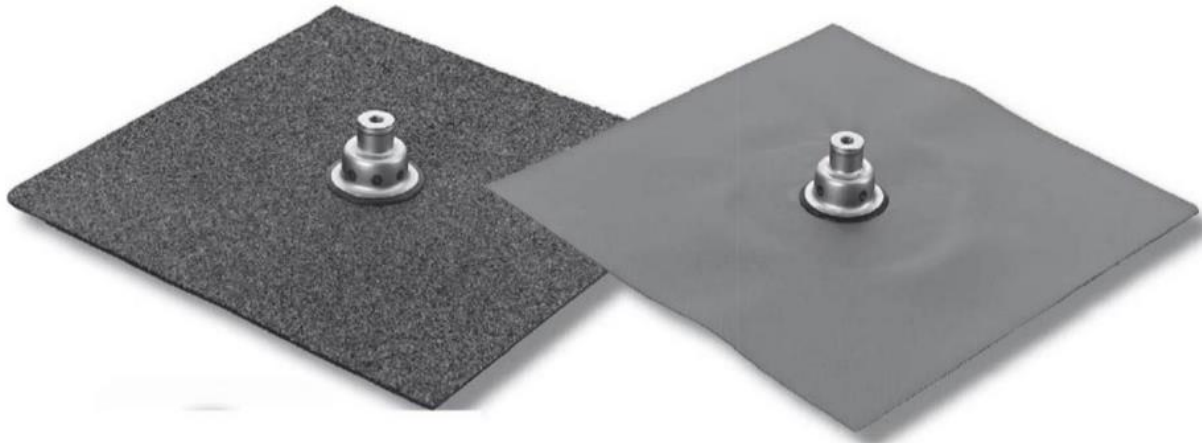


ROOF CONSOLE 1-LAYER



PRODUCT DESCRIPTION:

FIXNORDIC ROOF CONSOLE 1-LAYER FOR SAFE FIXATIONS ON FLAT ROOFS

For effective and safe fixation of constructional elements or other type of installations on warm, cold or flat roof constructions, equipped with various roofing membranes, such as solar cells, antennas or others. The roof console can be applied on buildings with both an inclined or flat roof as long as the specific type of roof construction is regarded.

APPLICATION AND LOAD CAPACITY

The precondition for a correct application of the Roof Console is that a qualified analysis is conducted of the various loads (wind, snow, cold and heat) which will impact each console throughout the expected lifetime of the installation. It is crucial that the analysis focuses on the complete system and hereby including elements such as: The roof deck, the VCL, insulation thickness, etc. FIXNORDIC recommends that the load design is performed either by, the system-suppliers, mounting system suppliers, solar contractors or consultancy engineers or architects and points out that FIXNORDIC is available to assist in this process. If Roof Consoles are used as a part of a complete solar installation where FIXNORDIC has made the load design of the mounting system including fixation, the specific console configuration with corresponding load calculations will be a part of the standard project documentation.

ORDERING:

TYPE	ITEM
ROOF CONSOLE 1-LAYER	220063-XXX Art. No.- Membrane No

Find the Membrane Overview under "downloads" on fixnordic@fixnordic.dk

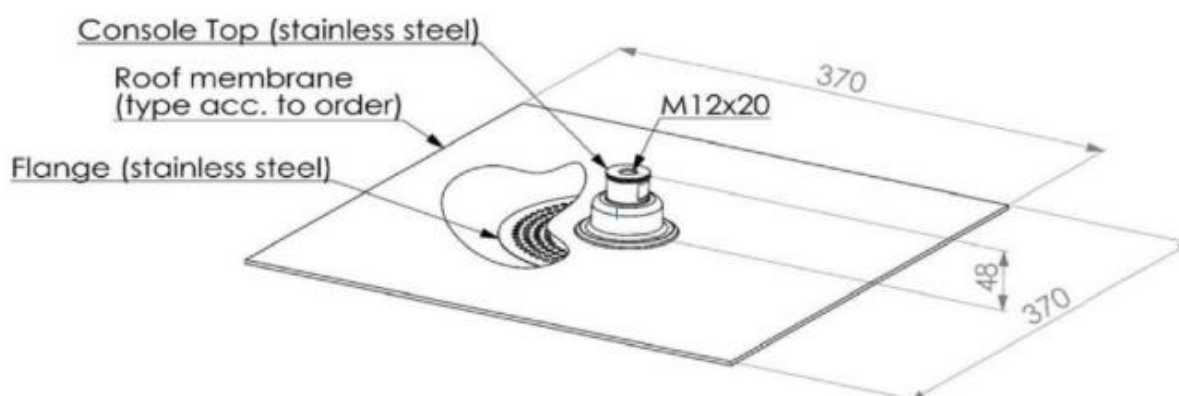
MATERIAL:

Flange: Stainless steel

Console interface: Stainless steel

Membrane: The type of the integrated membrane can be specified for each individual project.

TECHNICAL DATA:



INSTALLATION:

GENERAL INSTALLATION GUIDELINES

In order to ensure industry compliance to specific requirement set by the roofer and the building owner it is important, throughout the planning phase, to identify which type and possibly which brand of roofing membrane the flashing shell is configured with. It is furthermore an important part of the planning process that the specific roof deck type is identified in order to choose the right kind of Console anchor. For more information about Console anchor, please refer to the Console Anchor datasheet.

As a general recommendation FIXNORDIC recommends that Roof Console is applied by roofers who have been specifically trained for appliance of roof consoles.

APPLICATION

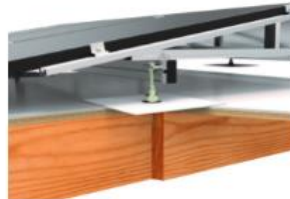
The Roof Console has been designed for the purpose of providing a systematic solution for fixation of solar installations or other types of equipment, which are often present on flat roof installations. The Roof Console has been designed in a close cooperation with the roofing industry guides and is therefore balanced with the flat roofing conventions and specifically with the requirement for fixation onto flat roofing surface.

INSTALLATION

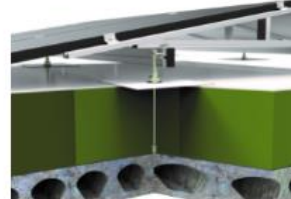
The installation procedure is firstly to attach the console anchor which is under the layer of bitumen and secondly to attach the Console top with integrated membrane. For further information about installation please refer to the specific installation guidelines or videos for the current roof deck type.



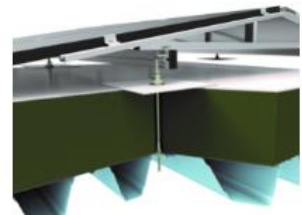
Board based surface
(Cold roof)



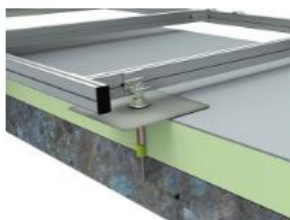
Wooden rafters
(Cold roof)



Concrete
(Warm roof)



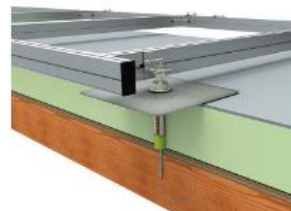
Trapez/steel
(Warm roof)



Concrete
(Warm roof)



Trapez/Steel
(Warm roof)



Wooden Rafters
(Warm roof)



Wooden rafters
(Cold roof)