



**JUAL
SOLAR**

JUAL SOLAR // CONSOLE SYSTEM // DATASHEET

CABLE FLASHING Ø50 FROM JUAL SOLAR



EN1253

TÜVRheinland®

LGAF

Produkttest og certificering er udført med basis i EN1253

PRODUCTDESCRIPTION:

JUAL SOLAR CABLE FLASHING

For safe and systematic penetration of cable brought through the roof membrane.

APPLICATION

Secure solution for bringing cables through the roofing membrane, where through cables can easily be installed without colliding with sharp edges or contours.

ORDERING:

TYPE	ITEM
CABLE FLAHING	220054-XXX Art. No.– Bitumen
Find the Membrane overview under "Downloads" on jualsolar.dk	

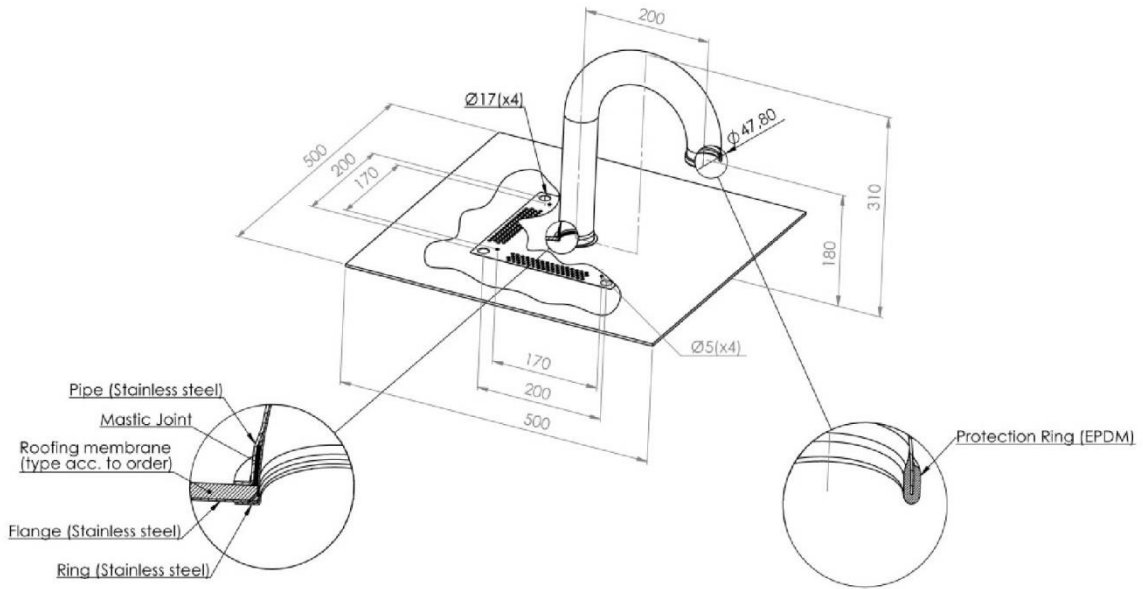
MATERIAL:

Flange:	Stainless steel
Pipe:	Stainless steel
Membrane:	The type of the integrated membrane can be specified for each individual project.



**CABLE FLASHING Ø50
FROM JUAL SOLAR**

TEKNICAL DATA:



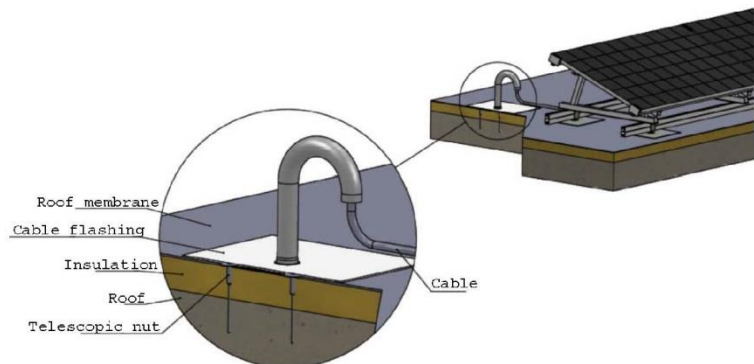
INSTALLATION:

GENERAL INSTALLATION GUIDELINES

The JUAL SOLAR Cable flashing should be fastened by standard telescopic screws in order to ensure sufficient flexibility and hereby enhance the endurance of the installation.

When the flashing has been fixed, the integrated membrane must be torched or welded to the roof membrane.

JUAL SOLAR recommends that cable ends are stripped and that the free wires are bend backwards before the cables are brought through the Cable flashing.



The illustrated installation example show a Cable Flashing mounted on a flat roof solar cell installation.